

**RESTRICTED**  
For Official Use Only

**April**  
**2013**



**MONTHLY SURVEY  
OF  
INDUSTRIAL  
PRODUCTION & EMPLOYMENT  
IN THE  
KHYBER PAKHTUNKHWA**

**BUREAU OF STATISTICS  
PLANNING & DEVELOPMENT DEPARTMENT  
GOVERNMENT OF KHYBER PAKHTUNKHWA  
P E S H A W A R**

# **PREFACE**

The Monthly Survey of Industrial Production and Employment is the regular monthly publication of the Bureau of Statistics, Khyber Pakhtunkhwa. It was initiated in 1976 consisting of four Industries, i.e. (1). Sugar, (2). Tobacco, (3). Cement and (4). Paper & Paper Board. The coverage went on increasing and the current issue covers information of 16 various types of large scale manufacturing industries, consisting of 107 total industrial units in Khyber Pakhtunkhwa.

2. This publication provides full information on production and employment of the various types of large scale manufacturing industries situated in the Khyber Pakhtunkhwa. The information covers in terms of quantity and value produced during the month compared with the information of the corresponding month of the previous year. The information regarding progressive total quantity and value of the various types of manufacturing units for the period starting from 1st July up to the reporting month of the current financial year as compared with the corresponding period of the previous financial year are included in this monthly publication.

3. An effort has been made to improve the contents and quality of the report according to the directions of the panel on the industrial statistics of the Federal Statistics Division and any advice/suggestion for its further improvement will be appreciated.

4. This publication, it is hoped, will serve the needs of a large number of users of the current data on manufacturing sector of the Khyber Pakhtunkhwa for decision and policy making including planning purposes.

**(JAVED IQBAL)**  
DIRECTOR  
BUREAU OF STATISTICS,  
KHYBER PAKHTUNKHWA, PESHAWAR.

Dated \_\_\_\_/\_\_\_\_/2013

## IMPORTANT

### COVERAGE

A total number of 88 factories have been covered in the Monthly Survey Report of the month of April 2013. Some of the factories produce more than one item but for reporting purposes the factory is counted for one time in the total.

2. In the table of production each factory has been counted against every item it produces.

3. Employment data for a factory is shown only once against the industry in which it is classified on the basis of its major products even though it produces more than one item included in the survey.

## CONTENTS

Table No.	Title	Page No.
	Index of the Industrial Production in Khyber Pakhtunkhwa	i - vii
	Analytical note on Industrial Production and Employment in Khyber Pakhtunkhwa April 2013.	1 - 2
1	Number of reporting units of selected items of regarding selected Large Scale Industries in Khyber Pakhtunkhwa during April 2013, March 2013 and March 2012.	3
2	Production of selected items regarding selected Large Scale Industries in Khyber Pakhtunkhwa during April 2013 & March 2012.	4
3	Production of selected items regarding selected Large Scale Industries in Khyber Pakhtunkhwa during April 2013 & April 2012.	5
4	Production of selected items regarding selected Large Scale Industries in Khyber Pakhtunkhwa during July-April 2011-12 & July-April 2012-13.	6
5	Total Employment in selected Large Scale Industries in Khyber Pakhtunkhwa during April 2013, March 2013 & April 2012.	7
6	Number of Production workers in selected Large Scale Industries in Khyber Pakhtunkhwa during April 2013, March 2013 & April 2012.	8
<b>Annex</b>		
i.	Beverages Industry	9
ii.	Cement Industry	10
iii.	Ceramics Industry	11
iv.	Cigarettes Industry	12
v.	Corn Industry	13
vi.	Cotton Textile Industry	14
vii.	Electric Bulb Industry	15
viii.	Fertilizer Industry	16
ix.	Jute Textile Industry	17
x.	Matches Industry	18
xi.	Paints Industry	19
xii.	Paper & Paper Board Industry	20
xiii.	Pharmaceutical	21
xiv.	Sugar Industry	22
xv.	Vegetable Ghee Industry	23
xvi.	Woollen Textile Industry	24

# MONTHLY SURVEY OF INDUSTRIAL PRODUCTION AND EMPLOYMENT IN THE KHYBER PAKHTUNKHWA, APRIL-2013

## Coverage

This Survey report covers 89 Industrial units pertaining to 16 Large Scale Industries manufacturing 35 items. which contribute about 36% of the Total Value Added of Large-Scale Manufacturing Sector in the Khyber Pakhtunkhwa

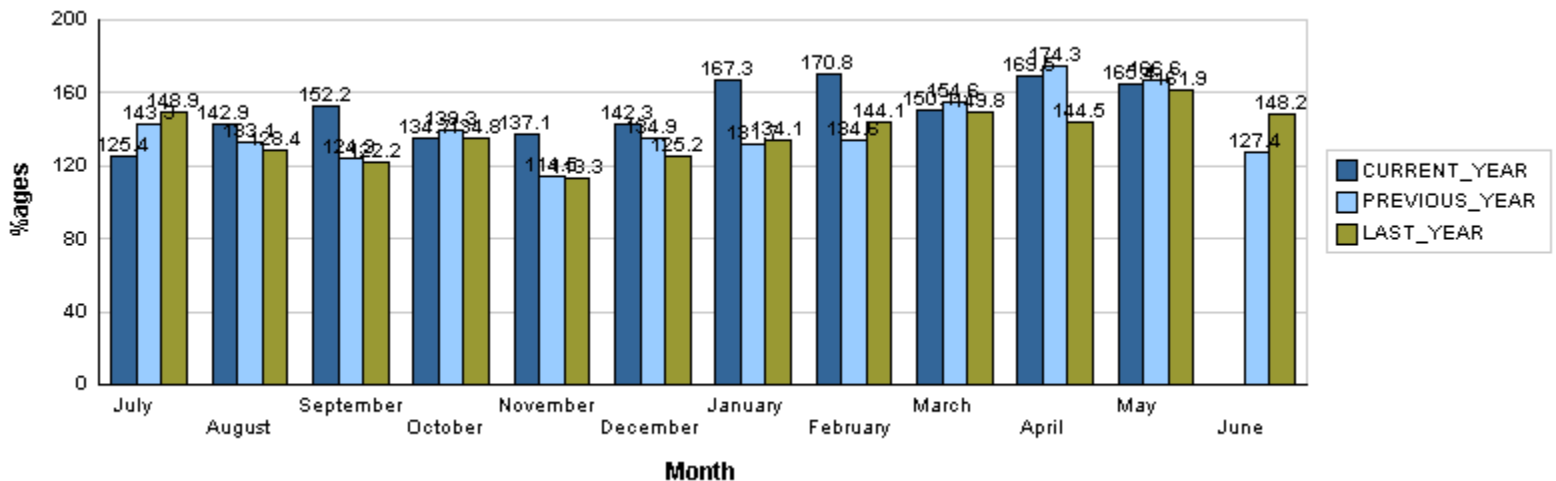
## INDUSTRIAL PRODUCTION INDEX

Industrial Production Index for the month of Apr-2013 stood at against 169.54 and 150.06 as compared to Mar-2013. Index Series from Apr-2013 is given as under

### INDEX OF INDUSTRIAL PRODUCTION IN THE KHYBER PAKHTUNKHWA (BASE: 2005-06 = 100)

Month	2009-10	2010-11	2011-12	2012-13
July	0.00	148.93	143.34	125.35
August	0.00	128.38	133.12	142.93
September	0.00	122.16	124.26	152.22
October	0.00	134.85	139.33	134.68
November	0.00	113.33	114.48	137.09
December	0.00	125.19	134.92	142.33
January	0.00	134.09	131.72	167.33
February	0.00	144.11	134.58	170.75
March	0.00	149.81	154.65	150.06
April	0.00	144.47	174.31	169.54
May	0.00	161.92	166.59	165.37
June	0.00	148.21	127.42	0.00
<b>Monthly Average</b>	<b>0.00</b>	<b>137.95</b>	<b>139.89</b>	

### INDEX OF INDUSTRIAL PRODUCTION IN THE KHYBER PAKHTUNKHWA (BASE: 2005-06 = 100)

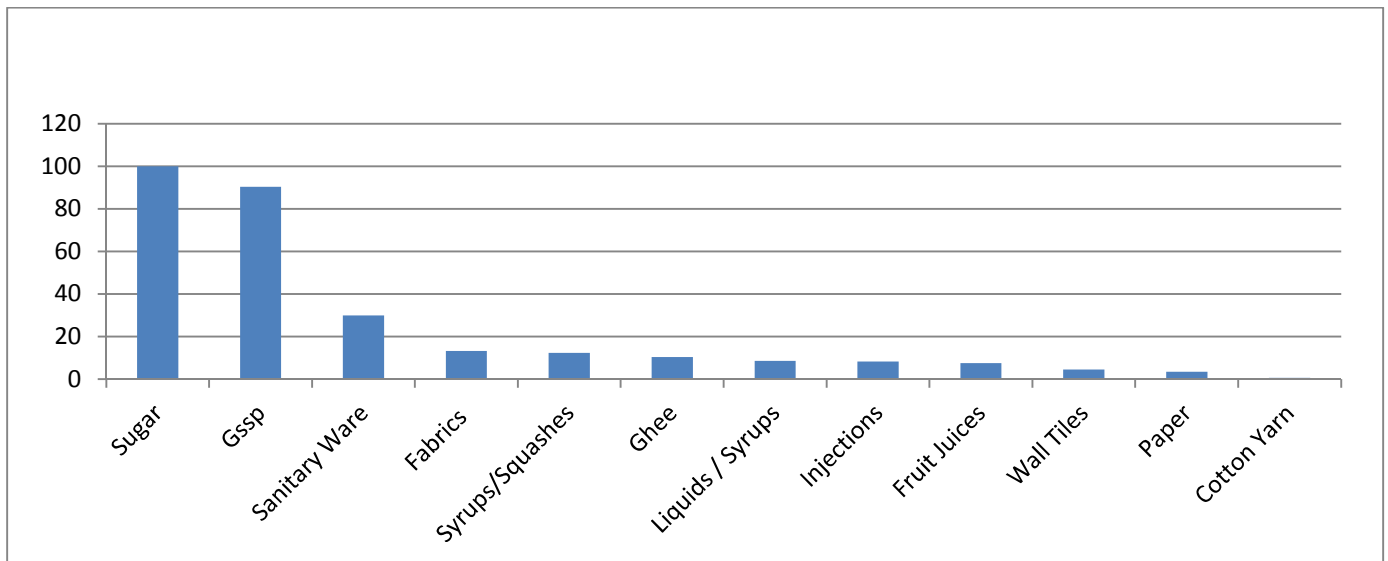


## PRODUCTION DURING APRIL-2013 VS MARCH-2013

Overall production during the month of April -2013 over March-2013 was 100% Lower than March-2013.

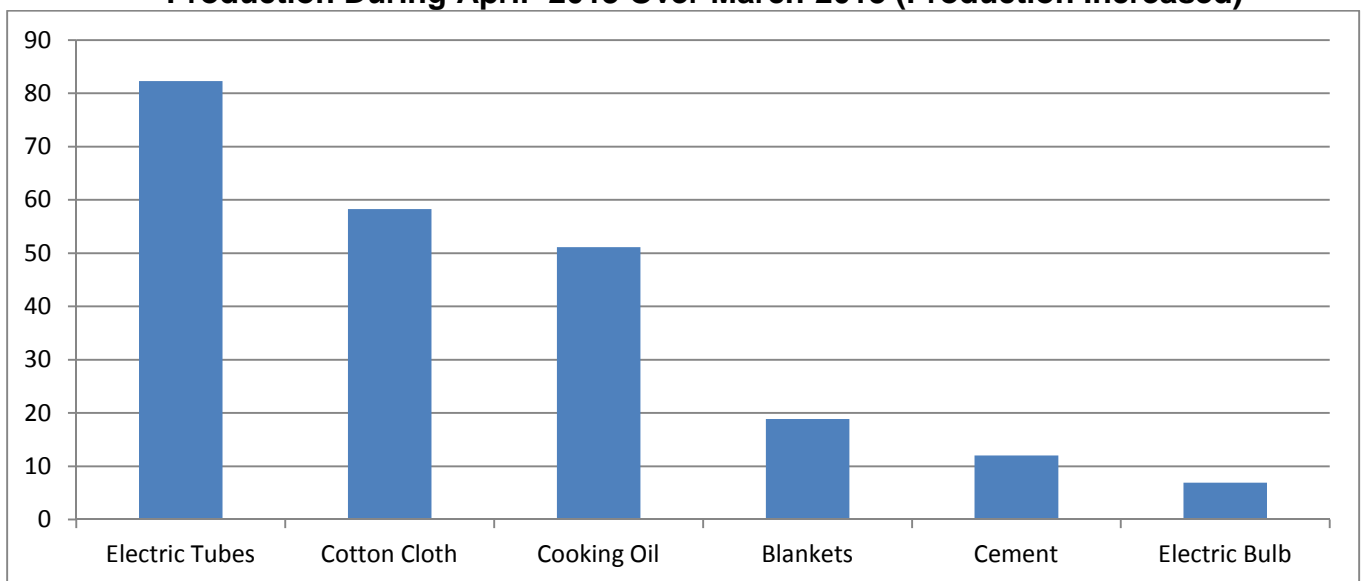
The production was lower in case of Sugar (100% ), Gssp (90.29% ), Sanitary Ware (29.91% ), Fabrics (13.33% ), Syrups & Squashes (12.37% ), Ghee (10.47% ), Liquids / Syrups (8.62% ), Injections (8.34% ), Fruit Juices (7.5% ), Wall Tiles (4.47% ), Paper (3.49% ), Cotton Yarn (.64% )

### Production During April -2013 Over March-2013 (Production Decreased)



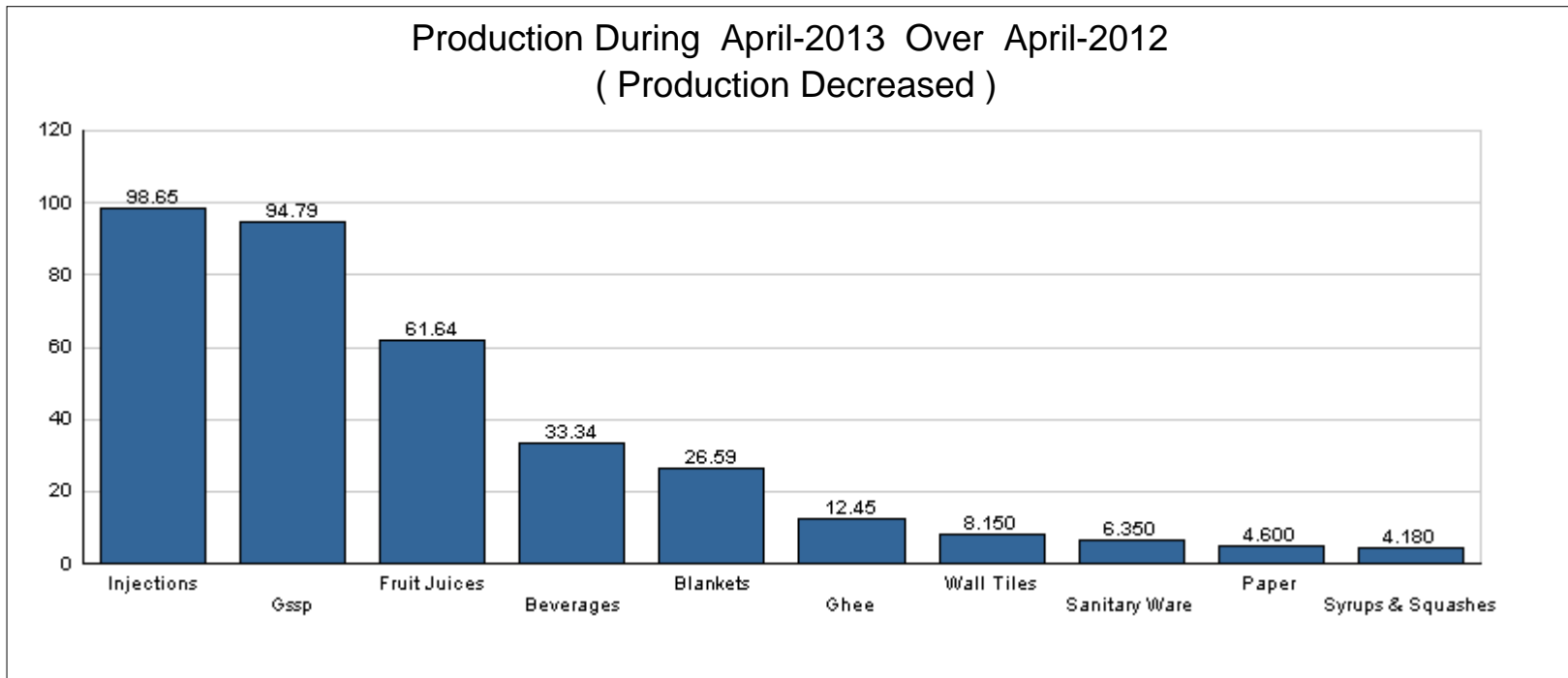
The production was higher in case of Electric Tubes (82.81% ), Cotton Cloth (58.28% ), Cooking Oil (51.09%) Blankets (18.88% ), Cement (12.02% ), Electric Bulb (6.94% )

### Production During April -2013 Over March-2013 (Production Increased)

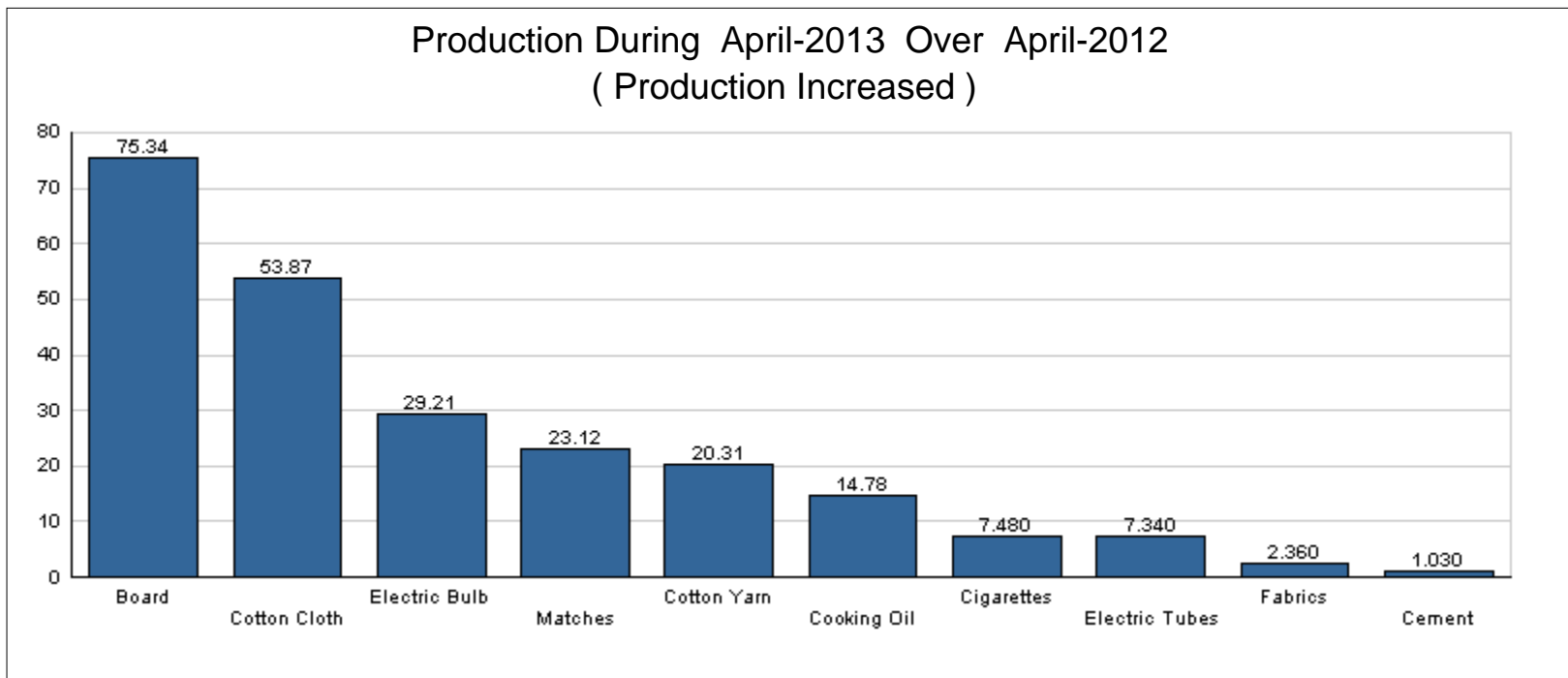


## PRODUCTION DURING APRIL-2013 VS APRIL-2012

The Production was lower in case of Starch (100%), Sugar (100%), Glucose (100%), Corn Oil (100%), Injections (98.65%), Gssp (94.79%), Fruit Juices (61.64%), Beverages (33.34%), Blankets (26.59%), Ghee (12.45%), Wall Tiles (8.15%), Sanitary Ware (6.35%), Paper (4.6%), Syrups & Squashes (4.18%)

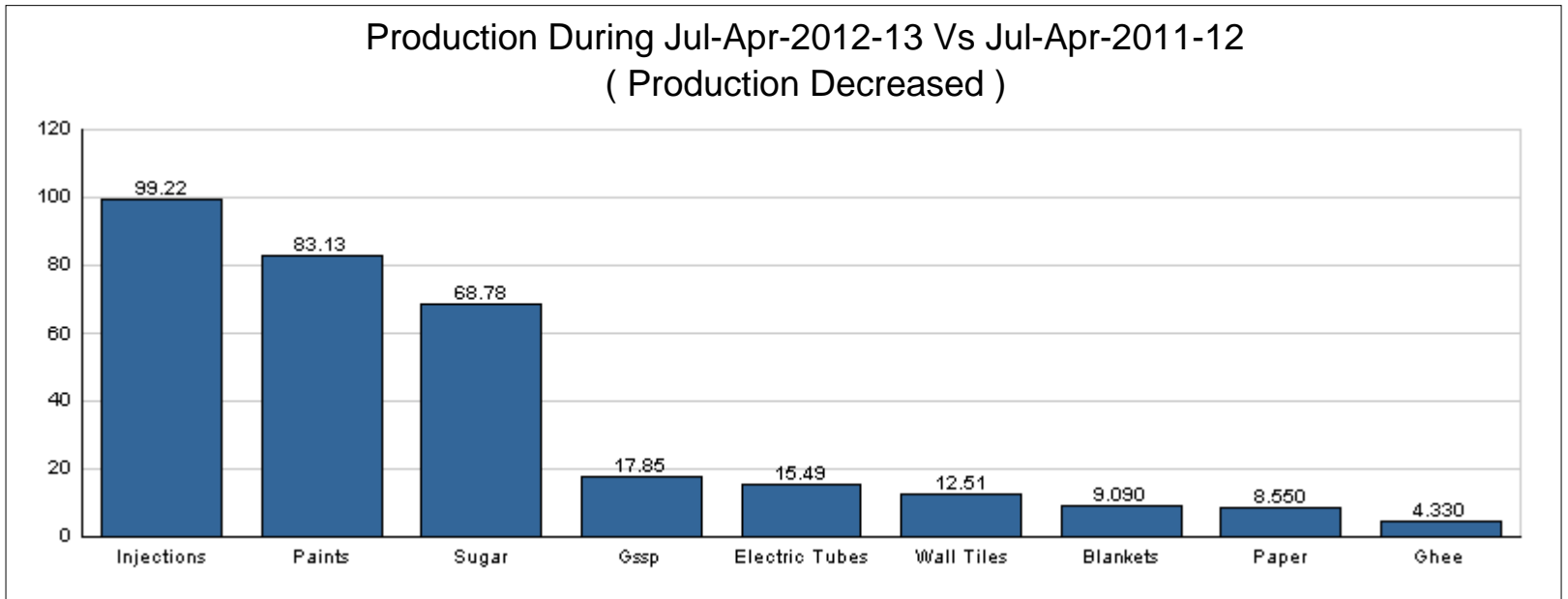


The production was higher in case of Board (75.34%), Cotton Cloth (53.87%), Electric Bulb (29.21%), Matches (23.12%), Cotton Yarn (20.31%), Cooking Oil (14.78%), Cigarettes (7.48%), Electric Tubes (7.34%), Fabrics (2.36%), Cement (1.03%)

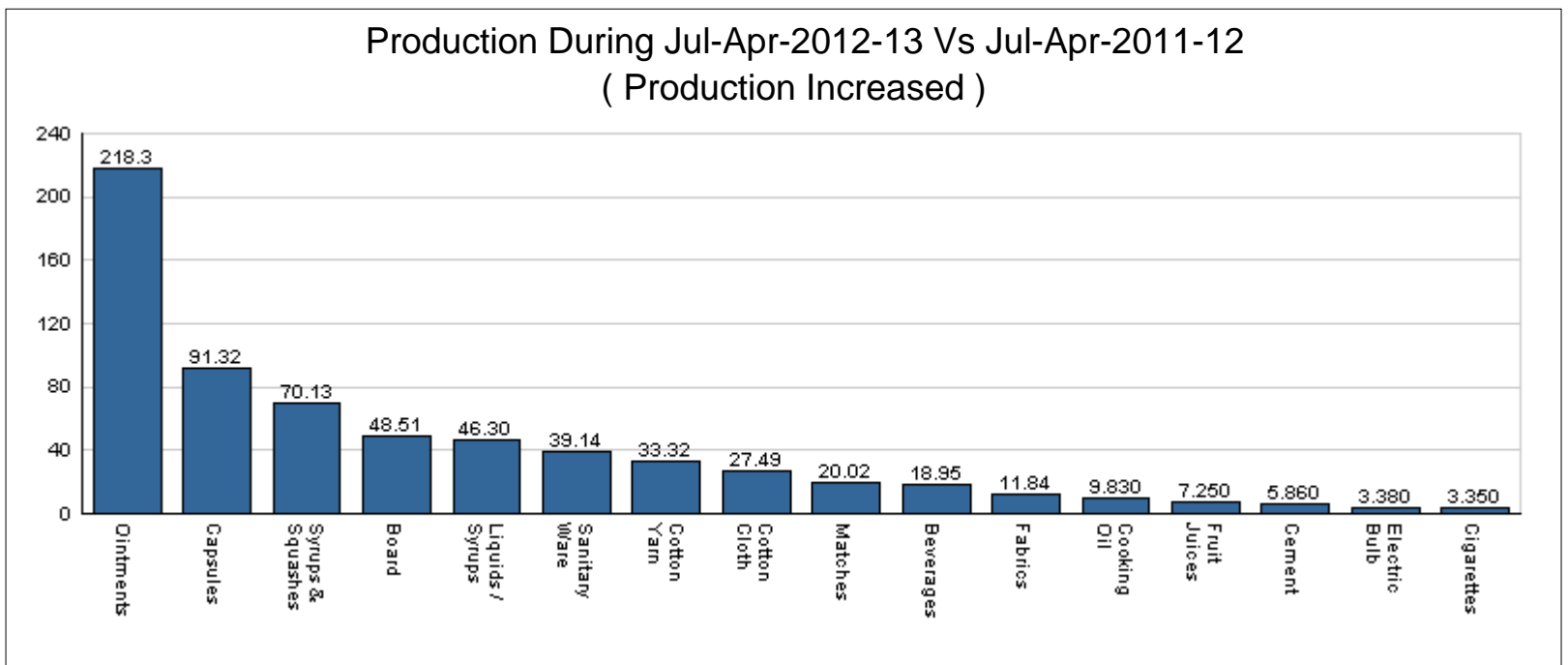


## PRODUCTION DURING Jul-Apr-2012-13 & Jul-Apr-2011-12

The production was lower in case of Glucose (100%), Galanicals Tinctures (100%), Corn Oil (100%), Starch (100%), Injections (99.22%), Paints (83.13%), Sugar (68.78%), Gssp (17.85%), Electric Tubes (15.49%), Wall Tiles (12.51%), Blankets (9.09%), Paper (8.55%), Ghee (4.33%)



The Production was higher in case of Ointments (218.34%), Capsules (91.32%), Syrups & Squashes (70.13%), Board (48.51%), Liquids / Syrups (46.3%), Sanitary Ware (39.14%), Cotton Yarn (33.32%), Cotton Cloth (27.49%), Matches (20.02%), Beverages (18.95%), Fabrics (11.84%), Cooking Oil (9.83%), Fruit Juices (7.25%), Cement (5.86%), Electric Bulb (3.38%), Cigarettes (3.35%)



## EMPLOYMENT DURING APRIL-2013 Vs APRIL-2013

Total Employment during April 2013 was 4.29% Less than April-2013



## Analytical Report

Important Items showing Higher/Lower Production during Apr-2013 as compared to Mar-2013 are as under:

S. No.	Industry / Item	Percentage Increase	Percentage Decrease	State
<b>1.</b>	<b>Beverages</b>			
I	Beverages	209.28		▲
II	Fruit Juices		7.50	▼
III	Syrups & Squashes		12.37	▼
<b>2.</b>	<b>Cement</b>			
I	Cement	12.02		▲
<b>3.</b>	<b>Ceramics</b>			
I	Sanitary Ware		29.91	▼
II	Wall Tiles		4.47	▼
<b>4.</b>	<b>Cigarettes</b>			
I	Cigarettes	0.47		▲
<b>5.</b>	<b>Corn Industry</b>			
<b>6.</b>	<b>Cotton Textile</b>			
II	Cotton Cloth	58.28		▲
III	Cotton Yarn		0.64	▼
<b>7.</b>	<b>Electric Bulb</b>			
I	Electric Bulb	6.94		▲
II	Electric Tubes	82.81		▲
<b>8.</b>	<b>Fertilizer</b>			
I	Gssp		90.29	▼
<b>9.</b>	<b>Jute Textile</b>			
<b>10.</b>	<b>Matches</b>			
I	Matches	0.68		▲
<b>11.</b>	<b>Paints And Varnish</b>			
<b>12.</b>	<b>Paper &amp; Paper Board</b>			
II	Paper		3.49	▼
<b>13.</b>	<b>Pharmaceutical</b>			
I	Capsules	346.65		▲
III	Injections		8.34	▼
IV	Liquids / Syrups		8.62	▼
V	Ointments	661.36		▲
VI	Tablets	1139.55		▲

## Analytical Report

Important Items showing Higher/Lower Production during **Apr-2013** as compared to **Mar-2013** are as under:

S. No.	Industry / Item	Percentage Increase	Percentage Decrease	State
14.	<b>Sugar</b>			
15.	<b>Vegetable Ghee</b>			
I	Cooking Oil	51.09		▲
II	Ghee		10.47	▼
16.	<b>Woolen</b>			
I	Blankets	18.88		▲
II	Fabrics		13.33	▼

### **EMPLOYMENT DURING APRIL-2013 Vs APRIL-2013**

Total Employment during April-2013 was 4.29% Less than April-2013

## EMPLOYMENT DURING THE MONTH OF APRIL , 2013

Important Items showing Higher/Lower Production during Apr-2013 as compared to Mar-2013 are as under:

S. No.	Item	Percentage Increase	Percentage Decrease	State
1.	Beverages	2.28	0.00	▲
2.	Cement	14.69	0.00	▲
3.	Ceramics	1.44	0.00	▲
4.	Cigarettes	0.00	0.96	▼
5.	Corn Industry	0.00	0.00	—
6.	Cotton Textile	0.00	1.03	▼
7.	Electric Bulb	1.42	0.00	▲
8.	Fertilizer	0.00	1.28	▼
9.	Jute Textile	0.00	0.00	—
10.	Matches	0.00	2.30	▼
11.	Paints And Varnish	0.00	0.00	—
12.	Paper & Paper Board	0.61	0.00	▲
13.	Pharmaceutical	0.00	43.52	▼
14.	Sugar	0.00	60.22	▼
15.	Vegetable Ghee	1.18	0.00	▲
16.	Woolen	22.22	0.00	▲

**REPORTED UNITS FOR THE MONTHS OF APR 2013 MAR 2013 AND APR 2012**

Table No. 1

<b>S.No.</b>	<b>Industry Name</b>	<b>April 2013</b>	<b>March 2013</b>	<b>April 2012</b>
1	<b>Beverages</b>	7	7	7
2	<b>Cement</b>	8	7	7
3	<b>Ceramics</b>	2	2	2
4	<b>Cigarettes</b>	7	7	6
5	<b>Corn Industry</b>	0	0	1
6	<b>Cotton Textile</b>	12	13	12
7	<b>Electric Bulb</b>	2	2	2
8	<b>Fertilizer</b>	1	1	1
9	<b>Matches</b>	13	14	14
10	<b>Paints And Varnish</b>	1	1	1
11	<b>Paper &amp; Paper Board</b>	4	4	3
12	<b>Pharmaceutical</b>	18	28	21
13	<b>Sugar</b>	1	3	5
14	<b>Vegetable Ghee</b>	14	14	15
15	<b>Woolen</b>	1	1	1
	<b>Total</b>	<b>91</b>	<b>104</b>	<b>98</b>

**PRODUCTION OF SELECTED ITEMS OF LARGE SCALE INDUSTRIES IN KHYBER PAKHTUNKHWA  
DURING THE MONTH OF APRIL-2013 AND MARCH-2013**

Table No: 2

(Number)

S. No.	Industry / Item	UOM	Production		Relative index Apr -2013 over Mar-2013
			Apr -2013	Mar-2013	
<b>1.</b>	<b>Beverages</b>				
I	Beverages	Ltr	10830531	3501852	309.28
II	Fruit Juices	Ltr	4338670	4690358	92.50
III	Syrups & Squashes	Ltr	3030483	3458140	87.63
<b>2.</b>	<b>Cement</b>				
I	Cement	M.Ton	885063	790095	112.02
<b>3.</b>	<b>Ceramics</b>				
I	Sanitary Ware	Pcs	5723	8165	70.09
II	Wall Tiles	Sq.M	200711	210106	95.53
<b>4.</b>	<b>Cigarettes</b>				
I	Cigarettes	M.Nos	2370	2359	100.47
<b>5.</b>	<b>Corn Industry</b>				
<b>6.</b>	<b>Cotton Textile</b>				
II	Cotton Cloth	000 Mtrs	1711	1081	158.28
III	Cotton Yarn	M.Ton	9673	9735	99.36
<b>7.</b>	<b>Electric Bulb</b>				
I	Electric Bulb	000 Nos	4543	4248	106.94
II	Electric Tubes	000 Mtrs	117	64	182.81
<b>8.</b>	<b>Fertilizer</b>				
I	Gssp	M.Ton	370	3810	9.71
<b>9.</b>	<b>Jute Textile</b>				
<b>10.</b>	<b>Matches</b>				
I	Matches	M.Box	442	439	100.68
<b>11.</b>	<b>Paints And Varnish</b>				
I	Paints	Kg	170	170	100.00
<b>12.</b>	<b>Paper &amp; Paper Board</b>				
I	Board	M.Ton	654	654	100.00
II	Paper	M.Ton	581	602	96.51
<b>13.</b>	<b>Pharmaceutical</b>				
I	Capsules	000 Nos	80749	18079	446.65

**PRODUCTION OF SELECTED ITEMS OF LARGE SCALE INDUSTRIES IN KHYBER PAKHTUNKHWA  
DURING THE MONTH OF APRIL-2013 AND MARCH-2013**

Table No: 2

(Number)

S. No.	Industry / Item	UOM	Production		Relative index Apr -2013 over Mar-2013
			Apr -2013	Mar-2013	
III	Injections	000 Nos	901	983	91.66
IV	Liquids / Syrups	000 Ltrs	3458	3784	91.38
V	Ointments	Kg	61914	8132	761.36
VI	Tablets	000 Nos	366449	29563	1239.55
<b>14.</b>	<b>Sugar</b>				
I	Sugar	M.Ton	0	16035	0.00
<b>15.</b>	<b>Vegetable Ghee</b>				
I	Cooking Oil	M.Ton	5406	3578	151.09
II	Ghee	M.Ton	19625	21921	89.53
<b>16.</b>	<b>Woolen</b>				
I	Blankets	No	4370	3676	118.88
II	Fabrics	000 Mtrs	130	150	86.67

**PRODUCTION OF SELECTED ITEMS OF LARGE SCALE INDUSTRIES IN KHYBER PAKHTUNKHWA  
DURING THE MONTH OF APRIL-2013 AND APRIL-2012**

Table No: 3

(Number)

S. No.	Industry / Item	UOM	Production		Relative Index Apr -2013 over Apr-2012
			Apr -2013	Apr-2012	
<b>1.</b>	<b>Beverages</b>				
I	Beverages	Ltr	10,830,531	16,247,145	66.66
II	Fruit Juices	Ltr	4,338,670	11,309,834	38.36
III	Syrups & Squashes	Ltr	3,030,483	3,162,557	95.82
<b>2.</b>	<b>Cement</b>				
I	Cement	M.Ton	885,063	876,041	101.03
<b>3.</b>	<b>Ceramics</b>				
I	Sanitary Ware	Pcs	5,723	6,111	93.65
II	Wall Tiles	Sq.M	200,711	218,525	91.85
<b>4.</b>	<b>Cigarettes</b>				
I	Cigarettes	M.Nos	2,370	2,205	107.48
<b>5.</b>	<b>Corn Industry</b>				
<b>6.</b>	<b>Cotton Textile</b>				
II	Cotton Cloth	000 Mtrs	1,711	1,112	153.87
III	Cotton Yarn	M.Ton	9,673	8,040	120.31
<b>7.</b>	<b>Electric Bulb</b>				
I	Electric Bulb	000 Nos	4,543	3,516	129.21
II	Electric Tubes	000 Mtrs	117	109	107.34
<b>8.</b>	<b>Fertilizer</b>				
I	Gssp	M.Ton	370	7,108	5.21
<b>9.</b>	<b>Jute Textile</b>				
<b>10.</b>	<b>Matches</b>				
I	Matches	M.Box	442	359	123.12
<b>11.</b>	<b>Paints And Varnish</b>				
I	Paints	Kg	170	170	100.00
<b>12.</b>	<b>Paper &amp; Paper Board</b>				
I	Board	M.Ton	654	373	175.34
II	Paper	M.Ton	581	609	95.40
<b>13.</b>	<b>Pharmaceutical</b>				
I	Capsules	000 Nos	80,749	10,645	758.56
III	Injections	000 Nos	901	66,831	1.35

**PRODUCTION OF SELECTED ITEMS OF LARGE SCALE INDUSTRIES IN KHYBER PAKHTUNKHWA  
DURING THE MONTH OF APRIL-2013 AND APRIL-2012**

Table No: 3

(Number)

S. No.	Industry / Item	UOM	Production		Relative Index Apr -2013 over Apr-2012
			Apr -2013	Apr-2012	
IV	Liquids / Syrups	000 Ltrs	3,458	148	2336.49
V	Ointments	Kg	61,914	4,577	1352.72
VI	Tablets	000 Nos	366,449	23,399	1566.09
<b>14.</b>	<b>Sugar</b>				
<b>15.</b>	<b>Vegetable Ghee</b>				
I	Cooking Oil	M.Ton	5,406	4,710	114.78
II	Ghee	M.Ton	19,625	22,416	87.55
<b>16.</b>	<b>Woolen</b>				
I	Blankets	No	4,370	5,953	73.41
II	Fabrics	000 Mtrs	130	127	102.36



**PRODUCTION OF SELECTED ITEMS OF LARGE SCALE INDUSTRIES IN KHYBER PAKHTUNKHWA  
DURING THE MONTH OF Jul-Apr:2012-2013 AND Jul-Apr:2011-2012**

Table No: 4

S. No.	Industry / Item	UOM	Production		Relative Index Jul-Apr - 2012-2013 Over Jul-Apr - 2011-2012
			Jul-Apr 2012-2013	Jul-Apr 2011-2012	
<b>1.</b>	<b>BEVERAGES</b>				
I	BEVERAGES	Ltr	106622162	89636405	119
II	FRUIT JUICES	Ltr	55602148	51845250	107
III	SYRUPS & SQUASHES	Ltr	20705386	12170530	170
<b>2.</b>	<b>CEMENT</b>				
I	CEMENT	M.Ton	7619463	7198006	106
<b>3.</b>	<b>CERAMICS</b>				
I	SANITARY WARE	Pcs	65943	47394	139
II	WALL TILES	Sq.M	1803099	2060840	87
<b>4.</b>	<b>CIGARETTES</b>				
I	CIGARETTES	M.Nos	19103	18484	103
<b>5.</b>	<b>CORN INDUSTRY</b>				
<b>6.</b>	<b>COTTON TEXTILE</b>				
II	COTTON CLOTH	000 Mtrs	11741	9209	127
III	COTTON YARN	M.Ton	92516	69395	133
<b>7.</b>	<b>ELECTRIC BULB</b>				
I	ELECTRIC BULB	000 Nos	35988	34813	103
II	ELECTRIC TUBES	000 Mtrs	971	1149	85
<b>8.</b>	<b>FERTILIZER</b>				
I	GSSP	M.Ton	48967	59608	82
<b>9.</b>	<b>JUTE TEXTILE</b>				
<b>10.</b>	<b>MATCHES</b>				
I	MATCHES	M.Box	3915	3262	120
<b>11.</b>	<b>PAINTS AND VARNISH</b>				
I	PAINTS	Kg	1700	10077	17
<b>12.</b>	<b>PAPER &amp; PAPER BOARD</b>				
I	BOARD	M.Ton	5039	3393	149
II	PAPER	M.Ton	6019	6582	91
<b>13.</b>	<b>PHARMACEUTICAL</b>				
I	CAPSULES	000 Nos	409025	213790	191
III	INJECTIONS	000 Nos	6891	886670	1
IV	LIQUIDS / SYRUPS	000 Ltrs	59203	40466	146

**PRODUCTION OF SELECTED ITEMS OF LARGE SCALE INDUSTRIES IN KHYBER PAKHTUNKHWA  
DURING THE MONTH OF Jul-Apr:2012-2013 AND Jul-Apr:2011-2012**

Table No: 4

S. No.	Industry / Item	UOM	Production		Relative Index Jul-Apr - 2012-2013 Over Jul-Apr - 2011-2012
			Jul-Apr 2012-2013	Jul-Apr 2011-2012	
V	OINTMENTS	Kg	102173	32096	318
VI	TABLETS	000 Nos	3661489	360736	1015
<b>14.</b>	<b>SUGAR</b>				
I	SUGAR	M.Ton	62091	198872	31
<b>15.</b>	<b>VEGETABLE GHEE</b>				
I	COOKING OIL	M.Ton	35022	31887	110
II	GHEE	M.Ton	220124	230090	96
<b>16.</b>	<b>WOOLEN</b>				
I	BLANKETS	No	58270	64094	91
II	FABRICS	000 Mtrs	1304	1166	112

**TOTAL NO. OF PRODUCTION WORKERS OF SELECTED ITEMS OF LARGE SCALE INDUSTRIES IN KHYBER PAKHTUNKHWA DURING THE MONTH OF Apr-2013 , Mar-2013 AND Apr-2012**

Table No: 5

S. No.	Industry	Employment (Non-Production)			Relative Index	
		Apr-2013	Mar-2013	Apr-2012	Apr-2013 over Mar-2013	Apr-2013 over Apr-2012
1	Beverages	1210	1183	1105	102.28	109.50
2	Cement	3216	2804	2757	114.69	116.65
3	Ceramics	211	208	189	101.44	111.64
4	Cigarettes	825	833	1016	99.04	81.20
5	Corn Industry	0	0	184	0.00	0.00
6	Cotton Textile	8757	8848	7843	98.97	111.65
7	Electric Bulb	285	281	272	101.42	104.78
8	Fertilizer	232	235	253	98.72	91.70
9	Jute Textile	0	0	0	0.00	0.00
10	Matches	1530	1566	1653	97.70	92.56
11	Paints And Varnish	10	10	10	100.00	100.00
12	Paper & Paper Board	164	163	225	100.61	72.89
13	Pharmaceutical	745	1319	810	56.48	91.98
14	Sugar	473	1189	2226	39.78	21.25
15	Vegetable Ghee	1117	1104	1034	101.18	108.03
16	Woolen	561	459	459	122.22	122.22

**TOTAL NO. OF PRODUCTION WORKERS OF SELECTED ITEMS OF LARGE SCALE INDUSTRIES IN KHYBER PAKHTUNKHWA DURING THE MONTH OF Apr-2013 , Mar-2013 AND Apr-2012**

Table No: 6

S. No.	Industry	Production Workers			Relative Index	
		Apr-2013	Mar-2013	Apr-2012	Apr-2013 over Mar-2013	Apr-2013 over Apr-2012
1	Beverages	576	517	494	111.41	116.60
2	Cement	2,347	2,031	2,006	115.56	117.00
3	Ceramics	163	157	147	103.82	110.88
4	Cigarettes	671	675	851	99.41	78.85
5	Corn Industry	0	0	106	0.00	0.00
6	Cotton Textile	7,139	7,225	6,378	98.81	111.93
7	Electric Bulb	266	261	253	101.92	105.14
8	Fertilizer	179	182	196	98.35	91.33
9	Jute Textile	0	0	0	0.00	0.00
10	Matches	1,284	1,362	1,470	94.27	87.35
11	Paints And Varnish	7	7	7	100.00	100.00
12	Paper & Paper Board	112	112	174	100.00	64.37
13	Pharmaceutical	523	882	569	59.30	91.92
14	Sugar	308	903	1,334	34.11	23.09
15	Vegetable Ghee	798	852	775	93.66	102.97
16	Woolen	448	388	388	115.46	115.46

# PRODUCTION AND EMPLOYMENT IN BEVERAGES INDUSTRY IN KHYBER PAKHTUNKHWA

Annexure-I

Year/Month	No. of Reporting Unit	Production			Value of Production			Employment			Salaries/Wages Paid (Rs.)		
		Beverages (Liter)	Fruit Juices	Syrups & Squashes	Beverages	Fruit Juices	Syrups & Squashes	Total	Production	Non-Production	Total	Production	Non-Production
2000-01	2	4412671	0	0	616253	0	0	338	86	252	688	159	529
2001-02	2	4968896	0	0	872846	0	0	319	80	239	1730	399	1331
2002-03	2	4379549	0	0	758233	0	0	295	86	209	1592	443	1149
2003-04	2	4944266	0	0	954858	0	0	267	91	176	668	184	484
2004-05	2	4351032	0	0	2285315	0	0	218	66	152	338	102	236
2005-06	1	5346986	0	0	1256464	0	0	249	60	189	0	0	0
2006-07	2	7842285	0	0	1107999	0	0	295	84	211	25	18	7
2007-08	3	8889115	0	0	1624340	0	0	265	66	199	19	13	6
2008-09	2	10539438	2019633	0	1814374	505771	0	292	78	214	0	0	0
2009-10	2	83314494	10373838	0	2803255	103545	0	290	55	235	0	0	0
2010-11	12	97681697	24309103	13525408	6038288	5646027	2044639	660	254	406	4655	2082	2573
2011-12	7	131312219	72212538	21402446	8702110	515604630	1628910085	937	377	560	5354	3082	2272
<u>Jul-Apr</u>	7	89636405	51845250	12170530	6392110	338806923	77248821	927	366	561	5287	3048	2239
Jul-2011	6	12836510	4029055	613531	483451	101583	65198788	1065	507	558	4808	3430	1378
Aug-2011	6	12238098	3015427	3004906	954402	24436376	512655	1033	469	564	5001	2691	2310
Sep-2011	7	11411015	3207741	25035	431136	24442092	8432	861	304	557	3936	1810	2126
Oct-2011	7	11248667	3743611	31033	431136	24455651	4902	835	278	557	3631	1530	2101
Nov-2011	6	3496337	2527423	0	1183103	24417175	0	671	194	477	2831	976	1855
Dec-2011	7	2167902	1443710	378942	1668740	24378465	363488	790	263	527	3970	1548	2422
Jan-2012	7	1714977	0	1462590	91472	0	248513	646	172	474	3232	1228	2004
Feb-2012	7	4997082	8909500	965199	168332	39562918	163922	963	372	591	4871	2320	2551
Mar-2012	7	13278672	9663266	2526737	437861	58460337	425124	1070	461	609	13974	11350	2624
Apr-2012	7	16247145	11309834	3162557	542477	94154871	10322997	1105	494	611	5660	3082	2578
May-2012	1	21353301	12530167	4615958	827127	100597581	775830632	1029	440	589	6152	3510	2642
Jun-2012	1	20322513	11832804	4615958	1482873	100597581	775830632	1183	573	610	6187	3510	2677
<u>2012-13</u> <u>Jul-Apr</u>	5	106622162	55602148	20705386	17277109	342531436	783240502	1149	444	705	5423	2571	2853
Jul-2012	1	16755948	11832804	4615958	1428821	100597581	775830632	1225	565	660	6517	3690	2827
Aug-2012	1	18299026	11832804	3250464	1082786	100597581	548957	1189	451	738	4771	2312	2459
Sep-2012	7	16434784	11832804	1941600	612444	100597581	271994	1515	440	1075	4912	2037	2875
Oct-2012	6	10458232	2642827	0	5599029	26554166	0	1047	378	669	4965	2147	2818
Nov-2012	5	6334267	1556292	18950	3265917	2186689	3263022	1019	356	663	4734	1917	2817
Dec-2012	5	952330	4645464	1037557	1061190	2150191	177229	1008	359	649	4622	1810	2812
Jan-2013	7	3501969	943714	1605396	583775	2164799	273505	1045	395	650	5384	2409	2975
Feb-2013	7	19553223	1286411	1746838	169309	2565540	1761083	1044	400	644	5413	2465	2948
Mar-2013	7	3501852	4690358	3458140	765548	2646840	608196	1183	517	666	6487	3446	3041
Apr-2013	7	10830531	4338670	3030483	2708290	2470468	505884	1210	576	634	6428	3473	2955

# PRODUCTION AND EMPLOYMENT IN CEMENT INDUSTRY IN KHYBER PAKHTUNKHWA

Annexure-II

Year/Month	No. of Reporting Unit	Production in M.T.	Value (Rs. in 000)	Employment			Salaries/Wages Paid (Rs.)		
				Total	Production	Non-Production	Total	Production	Non-Production
2000-01	3	1924161	3135250	1342	677	665	3989	1946	2043
2001-02	4	1976109	1096344	1467	860	607	6654	3456	3198
2002-03	4	3228029	3233573	1467	951	516	6111	3605	2506
2003-04	5	4181258	5257389	1347	908	439	3782	2348	1434
2004-05	4	4632995	6920750	956	739	217	1501	1360	141
2005-06	4	5136146	16143498	1083	833	250	5899	4622	1277
2006-07	5	6838947	28718882	1681	1243	438	12001	9331	2670
2007-08	6	7339248	34479686	1677	1261	416	11969	9856	2113
2008-09	6	6874597	17429543	2086	1624	462	13852	11106	2746
2009-10	7	8573131	31671116	2465	1835	630	25405	19474	5931
2010-11	8	8572389	49169544	2516	1875	641	31262	23026	8236
2011-12	8	8813090	73386819	2644	1933	711	39853	29015	10838
<u>Jul-Apr</u>	7	7198006	62371648	2670	1948	722	40031	29173	10858
Jul-2011	7	797417	5602449	2203	1654	549	28759	21708	7051
Aug-2011	7	618199	4812661	2702	1959	743	39684	28781	10903
Sep-2011	7	652688	5047857	2711	1968	743	41147	29831	11316
Oct-2011	7	825452	5446380	2717	1977	740	40931	29740	11191
Nov-2011	7	658351	5051313	2707	1970	737	40841	29638	11203
Dec-2011	7	706037	5066396	2683	1968	715	40975	29966	11009
Jan-2012	7	657615	5065882	2745	1999	746	41577	30405	11172
Feb-2012	7	615439	5075499	2736	1993	743	41789	30299	11490
Mar-2012	7	790767	7892844	2736	1987	749	41470	30340	11130
Apr-2012	7	876041	13310367	2757	2006	751	43136	31021	12115
May-2012	7	771442	5416728	2284	1723	561	34058	25093	8965
Jun-2012	7	843642	5598443	2750	1994	756	43872	31360	12512
<u>2012-13 Jul-Apr</u>	7	7619463	56083559	2710	1974	737	45327	32148	13179
Jul-2012	7	751799	4913187	2285	1732	553	34242	25135	9107
Aug-2012	7	690345	4871184	2755	1996	759	48009	34148	13861
Sep-2012	7	795151	5108634	2281	1730	551	37198	27016	10182
Oct-2012	7	657615	8715462	2725	1979	746	44390	30405	13985
Nov-2012	7	792295	5207079	2798	1988	810	48016	33872	14144
Dec-2012	7	805676	5357445	2735	1971	764	47771	33722	14049
Jan-2013	7	731731	5028835	2741	1967	774	47832	33577	14255
Feb-2013	7	719693	5145925	2761	1995	766	47464	33663	13801
Mar-2013	7	790095	5456045	2804	2031	773	47626	33544	14082
Apr-2013	8	885063	6279763	3216	2347	869	50725	36401	14324

# PRODUCTION AND EMPLOYMENT IN CERAMICS INDUSTRY IN KHYBER PAKHTUNKHWA

Annexure-III

Year/Month	No. of Reporting Unit	Production		Value (Rs. in 000)		Employment			Salaries/Wages Paid (Rs. in 000)		
		Sanitary Ware	Wall Tiles (in Sq.Mtr)	Sanitary Ware	Wall Tiles	Total	Production	Non-Production	Total	Production	Non-Production
2000-01	1	0	423342	0	54841	106	81	25	276	214	62
2001-02	1	0	643829	0	81838	113	91	22	274	218	56
2002-03	1	0	1146803	0	151652	99	77	22	279	220	59
2003-04	1	13750	1407693	3588	132709	6182	6155	27	268	202	66
2004-05	2	29544	1443957	7667	140170	120	84	36	390	266	124
2005-06	2	26079	1511371	6253	155750	131	90	41	442	320	122
2006-07	2	29460	1812548	6291	221798	153	118	35	541	431	110
2007-08	2	32015	2473633	9601	311712	200	132	68	695	538	157
2008-09	2	35638	2447234	15747	335935	191	143	48	1461	1263	198
2009-10	2	36261	2183589	14985	350856	201	150	51	1081	869	212
2010-11	2	48584	2059156	24194	404637	204	149	55	1250	952	298
2011-12	2	48704	2417179	24352	498802	199	147	52	1273	965	308
<u>Jul-Apr</u>	2	47394	2060840	23693	424292	202	149	53	1273	961	312
Jul-2011	2	3983	185294	1991	37655	204	147	57	1242	933	309
Aug-2011	2	4201	198085	2100	40255	206	147	59	1273	948	325
Sep-2011	2	2716	189779	1358	37391	204	148	56	1233	930	303
Oct-2011	2	5954	199013	2977	39211	203	147	56	1246	939	307
Nov-2011	2	3493	179167	1746	37026	213	156	57	1319	992	327
Dec-2011	2	5243	238845	2621	48043	211	154	57	1300	991	309
Jan-2012	2	5243	238845	2621	48601	211	154	57	1301	998	303
Feb-2012	2	5225	214527	2612	51387	193	150	43	1292	977	315
Mar-2012	2	5225	198760	2612	39988	185	142	43	1241	926	315
Apr-2012	2	6111	218525	3055	44735	189	147	42	1279	973	306
May-2012	2	6011	200722	3005	41795	210	155	55	1298	1007	291
Jun-2012	2	5775	155617	2887	32715	204	149	55	1260	969	291
<u>2012-13</u> <u>Jul-Apr</u>	2	65943	1803099	32970	832624	209	156	53	1532	1211	321
Jul-2012	2	7604	158600	3802	35126	209	154	55	1649	1275	374
Aug-2012	2	3140	176271	1570	37629	201	147	54	1450	1122	328
Sep-2012	2	3140	181820	1570	38814	209	153	56	1474	1137	337
Oct-2012	2	5546	177057	2773	37797	210	154	56	1483	1145	338
Nov-2012	2	7407	179371	3703	38400	217	161	56	1564	1222	342
Dec-2012	2	8531	168156	4265	47039	207	155	52	1544	1228	316
Jan-2013	1	8879	169950	4440	41212	211	160	51	1536	1226	310
Feb-2013	1	7808	181057	3904	43905	210	159	51	1524	1219	305
Mar-2013	1	8165	210106	4082	47899	208	157	51	1483	1193	290
Apr-2013	1	5723	200711	2861	464803	211	163	48	1613	1342	271

# PRODUCTION AND EMPLOYMENT IN CIGARETTES INDUSTRY IN KHYBER PAKHTUNKHWA

Annexure-I V

Year/Month	No. of Reporting Unit	Production in M.Nos.	Value (Rs. in 000)	Employment			Salaries/Wages Paid (Rs. in 000)		
				Total	Production	Non-Production	Total	Production	Non-Production
2000-01	8	17519	7693964	2138	1614	524	99	66	33
2001-02	6	17366	6766934	1642	1151	491	91	57	34
2002-03	5	13864	6203373	1579	1186	393	3528	2995	533
2003-04	6	14063	6703370	1489	1220	269	11544	9985	1559
2004-05	7	15918	8236263	1412	1134	278	11188	9819	1369
2005-06	4	17364	8692215	871	702	169	10941	9652	1289
2006-07	5	20777	13189374	879	708	171	12809	11437	1372
2007-08	5	20606	14876450	840	682	158	13612	12153	1459
2008-09	5	24217	19162180	925	767	158	14335	12918	1417
2009-10	7	19941	19229686	945	778	167	20332	18382	1950
2010-11	8	19673	21544188	941	775	166	26817	23055	3762
2011-12	8	27248	58730251	1074	898	176	28606	25935	2671
<u>Jul-Apr</u>	7	18484	48023486	1083	906	177	28823	26116	2707
Jul-2011	6	1763	2184871	1072	896	176	28081	25383	2698
Aug-2011	7	1671	2036057	1113	925	188	29106	26293	2813
Sep-2011	7	1468	1983431	1082	929	153	29077	26290	2787
Oct-2011	7	1722	2581896	1125	937	188	29598	26740	2858
Nov-2011	7	1662	2416255	1135	947	188	29450	26633	2817
Dec-2011	7	1888	2735088	1139	952	187	28820	26044	2776
Jan-2012	7	2412	3384697	1054	879	175	30735	27848	2887
Feb-2012	7	1770	25158013	1046	871	175	27829	25341	2488
Mar-2012	7	1923	2786439	1044	870	174	27643	25192	2451
Apr-2012	6	2205	2756739	1016	851	165	27888	25393	2495
May-2012	6	1786	2225743	1014	849	165	27517	25078	2439
Jun-2012	7	6978	8481022	1037	865	172	27533	24985	2548
<u>2012-13</u> <u>Jul-Apr</u>	7	19103	30019169	841	683	158	23594	21505	2089
Jul-2012	7	1081	3227101	851	686	165	16916	15411	1505
Aug-2012	8	1540	2084788	812	659	153	23594	21562	2032
Sep-2012	7	1736	2366577	811	659	152	23732	21644	2088
Oct-2012	7	1789	2587774	811	659	152	23550	21524	2026
Nov-2012	7	1853	2521655	868	705	163	24423	22319	2104
Dec-2012	7	2027	2762404	867	704	163	25043	23063	1980
Jan-2013	7	2175	2995213	869	708	161	26394	23760	2634
Feb-2013	7	2173	5066196	867	706	161	26394	23760	2634
Mar-2013	7	2359	3269313	833	675	158	22904	20962	1942
Apr-2013	7	2370	3138148	825	671	154	22990	21045	1945



# PRODUCTION AND EMPLOYMENT IN CORN INDUSTRY INDUSTRY IN KHYBER PAKHTUNKHWA

Annexure-V

Year/Month	No. of Reporting Unit	Production in M.T.			Value (Rs. in 000)			Employment			Salaries/Wages Paid (Rs. in 000)		
		Corn Oil	Glucose	Starch	Corn Oil	Glucose	Starch	Total	Production	Non-Production	Total	Production	Non-Production
2004-05	1	930	8669	17808	32245	124923	255834	310	221	89	0	0	0
2005-06	1	851	9537	16739	32858	145356	235377	310	218	92	0	0	0
2006-07	1	895	9433	17372	36213	155603	260598	308	215	93	0	0	0
2007-08	1	945	8510	17036	37219	340074	335880	309	217	92	0	0	0
2008-09	1	683	5901	16091	46607	168737	388703	283	196	87	0	0	0
2009-10	1	900	6421	16089	65328	195058	413507	268	189	79	0	0	0
2010-11	1	760	6820	14536	74393	330787	557748	269	196	73	0	0	0
2011-12	1	482	5624	12552	75424	236002	488109	220	146	74	0	0	0
<u>Jul-Apr</u>	1	445	5087	11490	67948	216318	443694	223	150	73	0	0	0
Jul-2011	1	61	569	1308	7000	24572	44383	270	204	66	0	0	0
Aug-2011	1	48	498	1270	6082	22912	44795	265	202	63	0	0	0
Sep-2011	1	58	430	1336	6448	20091	51610	262	181	81	0	0	0
Oct-2011	1	40	389	832	4864	21107	33459	215	147	68	0	0	0
Nov-2011	1	35	520	1280	5011	23459	45809	225	150	75	0	0	0
Dec-2011	1	55	533	1216	8639	25441	45978	262	193	69	0	0	0
Jan-2012	1	37	537	1062	7476	19684	44415	184	106	78	0	0	0
Feb-2012	1	37	537	1062	7476	19684	44415	184	106	78	0	0	0
Mar-2012	1	37	537	1062	7476	19684	44415	184	106	78	0	0	0
Apr-2012	1	37	537	1062	7476	19684	44415	184	106	78	0	0	0
May-2012	1	37	537	1062	7476	19684	44415	184	106	78	0	0	0
<u>2012-13</u> <u>Jul-Apr</u>	0	0	0	0	0	0	0	0	0	0	0	0	0
Jul-2012	0	0	0	0	0	0	0	0	0	0	0	0	0
Aug-2012	0	0	0	0	0	0	0	0	0	0	0	0	0
Sep-2012	0	0	0	0	0	0	0	0	0	0	0	0	0
Oct-2012	0	0	0	0	0	0	0	0	0	0	0	0	0
Nov-2012	0	0	0	0	0	0	0	0	0	0	0	0	0
Dec-2012	0	0	0	0	0	0	0	0	0	0	0	0	0
Jan-2013	0	0	0	0	0	0	0	0	0	0	0	0	0
Feb-2013	0	0	0	0	0	0	0	0	0	0	0	0	0
Mar-2013	0	0	0	0	0	0	0	0	0	0	0	0	0
Apr-2013	0	0	0	0	0	0	0	0	0	0	0	0	0

# PRODUCTION AND EMPLOYMENT IN COTTON TEXTILE INDUSTRY IN KHYBER PAKHTUNKHWA

Annexure-VI

Year/ Month	No. of Reporting Unit	Production				Value (Rs. in 000)				Employment			Salaries/Wages Paid (Rs. in 000)		
		Acrylic Fibre (M.T)	Cotton Cloth (000 Mtr)	Cotton Yarn (M.T)	Polyester Fibre (M.T)	Acrylic Fibre	Cotton Cloth	Cotton Yarn	Polyester Fibre	Total	Production	Non- Production	Total	Production	Non- Production
2000-01	9	0	2562	60462	0	0	44730	6727561	0	0	0	0	0	0	
2001-02	7	0	3560	57138	0	0	32861	6553813	0	0	0	0	0	0	
2002-03	8	0	6557	59386	0	0	60438	6959710	0	3747	2792	955	4344	2882	1462
2003-04	9	0	7823	69317	0	0	134418	8327030	0	8950	6630	2320	11796	7760	4036
2004-05	15	0	17674	86620	0	0	300364	10316963	0	10724	8253	2471	22293	15262	7031
2005-06	15	88858	14067	106584	0	7865000	141515	13242872	0	11705	9131	2574	33648	25177	8471
2006-07	12	151898	3510	96697	0	13444492	29305	12003673	27556	13880	11068	2812	51091	39325	11766
2007-08	14	97240	6931	89618	0	9075611	24502	11870298	65	11884	9367	2517	34820	26062	8758
2008-09	11	28118	3290	88696	0	3807000	67632	12181160	2385	10562	7781	2781	25323	21490	3833
2009-10	14	0	2824	96757	0	0	100692	19029564	51	9662	7626	2036	20444	16039	4405
2010-11	12	0	1974	89377	0	0	190300	28316120	0	8200	6436	1764	18637	14220	4417
2011-12	14	0	11351	86109	0	0	168135	25091312	0	8324	6785	1539	17702	16018	1684
<u>Jul-Apr</u>	11	0	9209	69395	0	0	143215	20883891	0	8292	6749	1543	17571	15903	1668
Jul-2011	12	0	585	6304	0	0	27676	2097909	0	8946	7462	1484	30127	27606	2521
Aug-2011	12	0	720	6111	0	0	15212	1872787	0	9029	7567	1462	30216	27487	2729
Sep-2011	12	0	755	6068	0	0	15212	1916219	0	8089	6542	1547	20102	16364	3738
Oct-2011	11	0	788	6633	0	0	15212	2156064	0	7949	6447	1502	13315	12603	712
Nov-2011	11	0	959	6485	0	0	15212	1989497	0	7951	6435	1516	13320	12594	726
Dec-2011	11	0	1081	6857	0	0	15212	2676345	0	8000	6496	1504	13545	12800	745
Jan-2012	14	0	1099	7721	0	0	9201	2108880	0	8127	6668	1459	13601	12220	1381
Feb-2012	7	0	1062	6985	0	0	13184	2004066	0	9049	7012	2037	13794	12406	1388
Mar-2012	12	0	1048	8191	0	0	5635	2050134	0	7939	6485	1454	13675	12327	1348
Apr-2012	12	0	1112	8040	0	0	11459	2011990	0	7843	6378	1465	14012	12624	1388
May-2012	1	0	1071	8369	0	0	12460	2119016	0	8629	7106	1523	19260	17484	1776
Jun-2012	1	0	1071	8345	0	0	12460	2088405	0	8342	6823	1519	17449	15695	1754
<u>2012-13 Jul-Apr</u>	13	0	11741	92516	0	0	103351	24144231	0	10546	8827	1720	17854	15915	1939
Jul-2012	12	0	912	8559	0	0	0	2134768	0	16078	14101	1977	8686	7526	1160
Aug-2012	13	0	912	8721	0	0	0	2192136	0	8419	6897	1522	17960	16779	1181
Sep-2012	12	0	911	9199	0	0	0	2192859	0	9168	7470	1698	19300	17397	1903
Oct-2012	13	0	1022	9330	0	0	13462	2483973	0	8457	6866	1591	16980	15331	1649
Nov-2012	13	0	1060	9166	0	0	14755	2304407	0	18655	16455	2200	8714	7533	1181
Dec-2012	13	0	1075	9748	0	0	14098	2568162	0	9017	7365	1652	21661	19469	2192
Jan-2013	13	0	1346	9528	0	0	15259	2546678	0	9024	7369	1655	21693	19491	2202
Feb-2013	13	0	1711	8857	0	0	15259	2331351	0	9037	7378	1659	21739	19558	2181
Mar-2013	12	0	1081	9735	0	0	15259	2700031	0	8848	7225	1623	19980	17990	1990
Apr-2013	12	0	1711	9673	0	0	15259	2689866	0	8757	7139	1618	21829	18074	3755

# PRODUCTION AND EMPLOYMENT IN ELECTRIC BULB INDUSTRY IN KHYBER PAKHTUNKHWA

Annexure-VII

Year/Month	No. of Reporting Unit	Production		Value (Rs. in 000)		Employment			Salaries/Wages Paid (Rs. in 000)		
		Electric Bulb (000 Nos)	Electric Tubes (000 Mtr)	Electric Bulb	Electric Tubes	Total	Production	Non-Production	Total	Production	Non-Production
2000-01	2	44819	0	0	0	277	248	29	0	0	0
2001-02	2	43058	0	0	0	291	265	26	0	0	0
2002-03	2	51382	0	0	0	328	297	31	0	0	0
2003-04	2	54674	4227	116391	116391	572	522	50	0	0	0
2004-05	4	66700	6123	164112	164112	349	324	25	227	198	29
2005-06	3	63010	5120	116354	116354	539	503	36	318	278	40
2006-07	3	57326	5345	197844	197844	253	232	21	382	317	65
2007-08	3	50540	4286	158286	158286	435	381	54	772	612	160
2008-09	3	48742	2534	252	252	293	252	41	707	527	180
2009-10	3	48825	2914	117692	117692	95	84	11	188	137	51
2010-11	4	43484	1180	68439	68439	252	236	16	0	0	0
2011-12	4	40296	1266	76219	76219	272	255	17	0	0	0
<u>Jul-Apr</u>	2	34813	1149	444112	68583	276	259	17	0	0	0
Jul-2011	2	3028	107	33276	6971	285	269	16	0	0	0
Aug-2011	2	2385	81	26202	5271	294	277	17	0	0	0
Sep-2011	2	3183	108	54932	7063	296	277	19	0	0	0
Oct-2011	2	3528	116	38812	7556	267	254	13	0	0	0
Nov-2011	2	3315	103	57750	6727	268	255	13	0	0	0
Dec-2011	2	4000	147	44488	8729	276	262	14	0	0	0
Jan-2012	3	4481	142	55642	8398	266	248	18	0	0	0
Feb-2012	2	3499	93	43292	4092	261	244	17	0	0	0
Mar-2012	2	3878	143	46302	6691	271	251	20	0	0	0
Apr-2012	2	3516	109	43416	7085	272	253	19	0	0	0
May-2012	2	3643	91	45004	5940	254	234	20	0	0	0
Jun-2012	2	1840	26	21769	1696	246	230	16	0	0	0
<u>2012-13 Jul-Apr</u>	2	35988	971	433634	125744	258	241	18	0	0	0
Jul-2012	2	1690	35	20728	2286	242	228	14	0	0	0
Aug-2012	2	1829	89	22652	5824	247	232	15	0	0	0
Sep-2012	2	2507	90	29833	4567	256	238	18	0	0	0
Oct-2012	2	3664	103	44983	6728	255	238	17	0	0	0
Nov-2012	2	4005	177	46288	6903	254	236	18	0	0	0
Dec-2012	2	4457	103	54570	6703	247	228	19	0	0	0
Jan-2013	2	4961	109	57878	7098	247	230	17	0	0	0
Feb-2013	2	4084	84	50117	5471	270	252	18	0	0	0
Mar-2013	2	4248	64	50985	4212	281	261	20	0	0	0
Apr-2013	2	4543	117	55600	75952	285	266	19	0	0	0

# PRODUCTION AND EMPLOYMENT IN FERTILIZER INDUSTRY IN KHYBER PAKHTUNKHWA

Annexure-VIII

Year/Month	No. of Reporting Unit	Production in M.T.	Value (Rs. in 000)	Employment			Salaries/Wages Paid (Rs.)		
				Total	Production	Non-Production	Total	Production	Non-Production
2000-01	1	113340	539664	250	161	89	0	0	0
2001-02	1	113340	539664	250	161	89	0	0	0
2002-03	1	80007	411483	144	48	96	0	0	0
2003-04	1	92905	528136	180	44	136	0	0	0
2004-05	1	87340	539234	233	51	182	0	0	0
2005-06	1	85455	1072436	256	53	203	0	0	0
2006-07	1	81930	590517	252	47	205	0	0	0
2007-08	1	92380	590625	239	40	199	0	0	0
2008-09	1	91821	1346428	203	100	103	2635	1776	859
2009-10	1	101225	1321419	267	205	62	6387	4688	1699
2010-11	1	94263	1423949	269	210	59	6655	5207	1448
2011-12	1	68191	1519836	265	203	62	6875	5254	1621
<u>Jul-Apr</u>	1	59608	1341474	267	204	63	6874	5244	1630
Jul-2011	1	2880	50476	310	211	99	6735	5206	1529
Aug-2011	1	6423	141948	333	273	60	6814	5189	1625
Sep-2011	1	2542	60245	261	201	60	6907	5241	1666
Oct-2011	1	6793	160994	258	198	60	6821	5188	1633
Nov-2011	1	6793	160994	258	198	60	6821	5188	1633
Dec-2011	1	11618	264425	244	186	58	7115	5438	1677
Jan-2012	1	11618	264425	244	186	58	7115	5438	1677
Feb-2012	1	1758	46411	255	197	58	6872	5241	1631
Mar-2012	1	2075	43284	255	197	58	6751	5133	1618
Apr-2012	1	7108	148272	253	196	57	6792	5179	1613
May-2012	1	7108	148272	253	196	57	6792	5179	1613
Jun-2012	1	1475	30090	250	195	55	6957	5426	1531
<u>2012-13</u> <u>Jul-Apr</u>	1	48967	1037411	241	186	55	6680	5143	1537
Jul-2012	1	5855	135836	248	191	57	6561	5009	1552
Aug-2012	1	5855	135836	248	191	57	6561	5009	1552
Sep-2012	1	2182	45167	245	188	57	6721	5156	1565
Oct-2012	1	10115	209390	240	185	55	6758	5198	1560
Nov-2012	1	11040	228528	240	185	55	7126	5528	1598
Dec-2012	1	2670	55002	243	188	55	6706	5151	1555
Jan-2013	1	2120	43672	242	187	55	6623	5059	1564
Feb-2013	1	4950	101970	239	184	55	6921	5292	1629
Mar-2013	1	3810	74388	235	182	53	6440	5023	1417
Apr-2013	1	370	7622	232	179	53	6382	5002	1380

**PRODUCTION AND EMPLOYMENT IN VEGETABLE GHEE INDUSTRY IN KHYBER PAKHTUNKHWA**

**Annexure-XVI**

Year/Month	No. of Reporting Unit	Production		Value of Production		Employment			Salaries/Wages Paid (Rs.)		
		Cooking Oil	Ghee	Cooking Oil	Ghee	Total	Production	Non-Production	Total	Production	Non-Production
2000-01	6	1999	187487	60236	5601981	435	286	149	541	383	158
2001-02	6	9172	187148	281364	4566407	636	458	178	1500	996	504
2002-03	9	9641	200537	376860	7075981	768	510	258	2234	1408	826
2003-04	11	12832	219041	348544	7691288	834	574	260	1346	803	543
2004-05	12	30891	279477	785893	10275069	1185	824	361	2742	1675	1067
2005-06	12	32348	358908	1404160	14933715	1244	822	422	3848	2401	1447
2006-07	16	27744	338729	1239675	17568118	1242	864	378	4471	2685	1786
2007-08	20	31580	338872	1274201	21077720	865	597	268	4226	2324	1902
2008-09	17	37043	311226	2217129	26340529	1194	894	300	6065	4371	1694
2009-10	13	24994	236154	1642280	20094776	1057	717	340	5450	3296	2154
2010-11	17	29730	252036	2316211	26867917	948	695	253	6230	4119	2111
2011-12	25	40840	283911	4949648	37218122	1010	751	259	6701	4453	2248
<u>Jul-Apr</u>	15	31887	230090	3808239	30110684	1005	745	260	6584	4362	2222
Jul-2011	16	2737	26218	350171	3170797	995	735	260	4318	2512	1806
Aug-2011	15	3270	30315	281942	3769906	1011	758	253	5605	3749	1856
Sep-2011	14	2141	22487	263094	2874244	1018	764	254	5646	3751	1895
Oct-2011	15	3097	25504	152877	2676574	834	597	237	4547	2741	1806
Nov-2011	15	1960	20823	174530	2490159	828	583	245	6032	3726	2306
Dec-2011	15	3392	28469	407112	4909894	1044	785	259	8009	5516	2493
Jan-2012	15	3573	20563	471408	2650647	1034	722	312	7541	5019	2522
Feb-2012	15	3019	16896	402885	2310249	1124	864	260	8157	5574	2583
Mar-2012	15	3988	16399	591348	2050124	1123	865	258	8539	6058	2481
Apr-2012	15	4710	22416	712872	3208090	1034	775	259	7445	4978	2467
May-2012	15	4811	25590	488553	3223516	1030	772	258	7289	4961	2328
Jun-2012	15	4142	28231	652856	3883922	1047	795	252	7284	4850	2434
<u>2012-13</u> <u>Jul-Apr</u>	14	35022	220124	5036678	30476263	1052	797	255	7594	5079	2515
Jul-2012	15	3162	25232	406795	3000646	853	620	233	5753	3324	2429
Aug-2012	15	3412	19879	501327	3114022	1041	787	254	7439	4792	2647
Sep-2012	14	3337	19654	495522	4284914	1029	739	290	7033	4383	2650
Oct-2012	13	2118	16300	321182	2166747	991	761	230	5699	3993	1706
Nov-2012	13	3038	21499	425651	2215521	994	779	215	6980	4866	2114
Dec-2012	14	4462	23731	594619	2294869	1133	869	264	8654	5951	2703
Jan-2013	14	3207	26723	473313	4013339	1128	855	273	8585	5767	2818
Feb-2013	14	3302	25560	488002	4254882	1128	856	272	8595	5772	2823
Mar-2013	13	3578	21921	550370	2646608	1104	852	252	8671	6020	2651
Apr-2013	13	5406	19625	779897	2484715	1117	850	267	8530	5925	2605

**PRODUCTION AND EMPLOYMENT IN MATCHES INDUSTRY IN KHYBER PAKHTUNKHWA**

**Annexure-X**

Year/Month	No. of Reporting Unit	Production in M.Nos.	Value (Rs. in 000)	Employment			Salaries/Wages Paid (Rs. in 000)		
				Total	Production	Non-Production	Total	Production	Non-Production
2001-02	5	945	234925	235	211	24	413	350	63
2002-03	3	1123	250099	256	225	31	719	598	121
2003-04	7	2591	696433	548	456	92	479	342	137
2004-05	13	2630	697400	641	536	105	849	628	221
2005-06	10	4036	1403202	1709	1486	223	3793	2942	851
2006-07	15	5168	1721495	1041	850	191	2944	2353	591
2007-08	16	5535	1581460	908	736	172	2728	2152	576
2008-09	14	4601	1504411	1917	1592	325	7994	6254	1740
2009-10	16	4494	1433559	2231	1820	411	7652	5916	1736
2010-11	17	4359	1759573	1944	1669	275	8797	7023	1774
2011-12	15	3984	1488998	2536	2260	276	15171	13195	1976
<u>Jul-Apr</u>	13	3262	1227947	1710	1415	295	15184	13067	2117
Jul-2011	13	312	130643	1711	1451	260	10136	7598	2538
Aug-2011	13	290	127257	1737	1473	264	18611	15969	2642
Sep-2011	13	280	117528	1739	1475	264	10498	7856	2642
Oct-2011	13	308	125180	1717	1460	257	10479	7867	2612
Nov-2011	13	327	146360	1838	1475	363	12517	9881	2636
Dec-2011	13	353	143338	1758	1253	505	20923	18225	2698
Jan-2012	14	348	108357	1579	1128	451	20055	18519	1536
Feb-2012	14	337	102470	1692	1466	226	17772	16411	1361
Mar-2012	14	348	96163	1679	1502	177	15520	14298	1222
Apr-2012	14	359	130651	1653	1470	183	15330	14044	1286
May-2012	14	362	132307	6662	6481	181	15029	13741	1288
Jun-2012	14	360	128744	6672	6488	184	15173	13926	1247
<u>2012-13</u> <u>Jul-Apr</u>	14	3915	1788368	1641	1462	179	17200	15053	2147
Jul-2012	14	350	160142	1659	1475	184	36233	34899	1334
Aug-2012	14	339	151883	1676	1493	183	38741	37195	1546
Sep-2012	14	347	155397	1681	1498	183	38683	37137	1546
Oct-2012	15	377	159886	1730	1588	142	7264	5036	2228
Nov-2012	15	365	171707	1733	1590	143	7285	5060	2225
Dec-2012	14	379	149551	1663	1522	141	7120	4875	2245
Jan-2013	14	455	214997	1591	1386	205	9402	7037	2365
Feb-2013	14	422	196471	1584	1377	207	8947	5537	3410
Mar-2013	14	439	213706	1566	1362	204	9351	6985	2366
Apr-2013	13	442	214628	1530	1332	198	8970	6766	2204

# PRODUCTION AND EMPLOYMENT IN PAINTS INDUSTRY IN KHYBER PAKHTUNKHWA

**Annexure-XI**

Year/Month	No. of Reporting Unit	Production in Kg	Value (Rs. in 000)	Employment			Salaries/Wages Paid (Rs. in 000)		
				Total	Production	Non-Production	Total	Production	Non-Production
2000-01	1	74976	9024	17	12	5	27	18	9
2001-02	2	35337	4123	14	10	4	30	20	10
2002-03	1	19858	2244	13	10	3	37	25	12
2003-04	1	15705	1995	12	9	3	35	22	13
2004-05	1	19135	1269	14	10	4	48	30	18
2005-06	1	43106	2474	17	10	7	50	33	17
2006-07	1	28068	2525	14	10	4	60	40	20
2007-08	1	24933	2703	12	8	4	86	41	45
2008-09	1	25760	3980	11	7	4	68	43	25
2009-10	1	12675	2741899	10	7	3	69	45	24
2010-11	1	9353	1647	10	7	3	81	51	30
2011-12	1	10417	2684	10	7	3	86	56	30
<u>Jul-Apr</u>	1	10077	2250	10	7	3	86	56	30
Jul-2011	1	591	114	10	7	3	86	56	30
Aug-2011	1	1673	211	10	7	3	86	56	30
Sep-2011	1	748	162	10	7	3	86	56	30
Oct-2011	1	992	136	10	7	3	86	56	30
Nov-2011	1	3340	415	10	7	3	86	56	30
Dec-2011	1	1208	202	10	7	3	86	56	30
Jan-2012	1	845	144	10	7	3	86	56	30
Feb-2012	1	340	432	10	7	3	86	56	30
Mar-2012	1	170	217	10	7	3	86	56	30
Apr-2012	1	170	217	10	7	3	86	56	30
May-2012	1	170	217	10	7	3	86	56	30
Jun-2012	1	170	217	10	7	3	86	56	30
<u>2012-13</u>									
<u>Jul-Apr</u>	1	1700	2170	10	7	3	86	56	30
Jul-2012	1	170	217	10	7	3	86	56	30
Aug-2012	1	170	217	10	7	3	86	56	30
Sep-2012	1	170	217	10	7	3	86	56	30
Oct-2012	1	170	217	10	7	3	86	56	30
Nov-2012	1	170	217	10	7	3	86	56	30
Dec-2012	1	170	217	10	7	3	86	56	30
Jan-2013	1	170	217	10	7	3	86	56	30
Feb-2013	1	170	217	10	7	3	86	56	30
Mar-2013	1	170	217	10	7	3	86	56	30
Apr-2013	1	170	217	10	7	3	86	56	30

# PRODUCTION AND EMPLOYMENT IN PAPER & PAPER BOARD INDUSTRY IN KHYBER

Annexure-XII

Year/Month	No. of Reporting Unit	Production (M.T)		Value (Rs. in 000)		Employment			Salaries/Wages Paid (Rs. in 000)		
		Board	Paper	Board	Paper	Total	Production	Non-Production	Total	Production	Non-Production
2000-01	1	0	7245	0	275220	180	127	53	0	0	0
2001-02	1	0	6320	0	231082	179	127	52	0	0	0
2002-03	2	7493	9198	96815	420795	236	172	64	0	0	0
2003-04	2	11877	8039	134779	338053	233	166	67	0	0	0
2004-05	3	5320	8254	63786	397793	311	248	63	30	7	23
2005-06	2	4722	6859	63048	224398	208	148	60	0	0	0
2006-07	2	4358	5842	127913	177988	215	154	61	0	0	0
2007-08	2	3796	5659	73416	233681	227	163	64	0	0	0
2008-09	2	4318	5375	88025	256169	246	181	65	159	135	24
2009-10	3	11593	1805	193560	88916	134	95	39	422	272	150
2010-11	4	11373	1674	241112	66787	209	148	61	976	637	339
2011-12	4	4129	7965	130201	199988	230	178	52	1206	933	273
<u>Jul-Apr</u>	3	3393	6582	107289	168790	231	179	52	1191	924	267
Jul-2011	3	318	645	10180	15358	239	184	55	1208	938	270
Aug-2011	3	349	700	10890	17980	238	185	53	1211	941	270
Sep-2011	3	314	388	9891	8337	237	183	54	1181	908	273
Oct-2011	3	312	681	10006	17071	232	182	50	1152	909	243
Nov-2011	3	305	546	9438	13148	230	179	51	1171	915	256
Dec-2011	3	360	687	11451	17703	224	173	51	1188	923	265
Jan-2012	3	350	747	11202	20330	229	177	52	1185	921	264
Feb-2012	3	353	778	10852	22055	229	178	51	1173	909	264
Mar-2012	3	359	801	11422	23054	227	175	52	1183	918	265
Apr-2012	3	373	609	11957	13754	225	174	51	1259	962	297
May-2012	3	368	714	11456	18409	226	173	53	1280	974	306
Jun-2012	3	368	669	11456	12789	226	174	52	1280	974	306
<u>2012-13</u> <u>Jul-Apr</u>	4	5039	6019	84047	149749	188	136	52	1104	767	336
Jul-2012	3	368	715	11456	18656	226	173	53	1280	974	306
Aug-2012	3	354	682	11325	13073	223	171	52	1261	955	306
Sep-2012	3	339	602	11194	13537	225	171	54	1351	1042	309
Oct-2012	4	588	522	3882	13217	146	103	43	725	538	187
Nov-2012	3	329	578	2044	14992	146	103	43	867	545	322
Dec-2012	4	657	597	6029	15247	166	115	51	1032	627	405
Jan-2013	4	632	597	18591	14770	253	186	67	1564	1142	422
Feb-2013	4	464	543	4998	14291	165	113	52	898	630	268
Mar-2013	4	654	602	7264	16207	163	112	51	1037	622	415
Apr-2013	4	654	581	7264	15759	164	112	52	1022	599	423



# PRODUCTION AND EMPLOYMENT IN PHARMACEUTICAL INDUSTRY IN KHYBER PAKHTUNKHWA

Annexure-XIII

Year/ Month	No. of Reporing Unit	Production						Value of Production						Employment			Salaries/Wages Paid (Rs. in 000)		
		Capsules	Galanicals Tinctures/ Spirits (000 Ltr)	Injec-tions	Liquids/ Syrups (000 Ltr)	Ointmnts (Kg)	Tablets (000 Nos)	Capsule	Galanicals Tinctures/ Spirits	Injec-tion	Liquids/ Syrups	Ointmnt	Tablet	Total	Production	Non- Production	Total	Production	Non- Production
2005-06	9	7737625	39	1784	1263011	46320	143399153	322220	4578360	95307	93226985	23073270	207119889	587	327	260	1787784	1144371	643413
2006-07	10	7265950	5	1724	348573	24851	152996146	12456400	871856	83188	98071458	27801048	188262714	602	328	274	2178015	1455593	722422
2007-08	10	8671607	0	349012	1474324	23307	44606938	6634356	0	149407	20106875	36069	7613553	726	433	293	3150358	2174071	976287
2008-09	13	8678479	0	228418	1013189	1240	30076596	3518090	0	321895	13579801	46073	6656003	749	446	303	2653941	2026674	627267
2009-10	10	14381973	0	300585	1615027	39822	79504742	19076605	1960	770009	53943188	10700353	160169922	182	104	78	440072	312345	127727
2010-11	72	270278	469	6616	342462	36837	1094030	4531262	0	131968	6029438	60286	9790828	1530	957	573	819078	578740	240338
2011-12	72	220997	12	887137	41382	37576	403061	1178211	0	10201367	428094	28540	2817299	1008	654	354	153495	99537	53958
<u>Jul-Apr</u>	25	213790	12	886670	40466	32096	360736	1160177	0	10195005	407592	28540	2785157	1083	693	390	183200	118786	64414
Jul-2011	36	29866	12	235394	27144	2628	44047	21517	0	23989	44112	8123	65845	2034	930	1104	958291	483578	474713
Aug-2011	31	41777	0	129121	3946	3035	41525	16490	0	12409	29631	3945	76858	1618	933	685	18865	9526	9339
Sep-2011	23	27922	0	29825	95	1991	23422	19881	0	1608631	8194	2783	61993	924	647	277	19422	11578	7844
Oct-2011	25	17555	0	35878	3170	1803	24535	244824	0	2240283	106919	3398	134902	948	659	289	124395	107534	16861
Nov-2011	25	10822	0	31664	5218	2259	23993	544497	0	905317	162131	3803	57530	926	645	281	131242	114417	16825
Dec-2011	23	28313	0	65468	241	3761	32701	176365	0	2317622	19934	1638	237890	857	602	255	130834	114140	16694
Jan-2012	24	19166	0	105209	183	4085	61233	57997	0	3040487	8568	1402	171186	933	676	257	263186	211406	51780
Feb-2012	25	17079	0	120449	173	3380	62482	54164	0	26647	11789	860	148767	972	703	269	9484	5933	3551
Mar-2012	21	10645	0	66831	148	4577	23399	12221	0	9810	8157	1294	1681419	810	569	241	88139	64874	23265
Apr-2012	21	10645	0	66831	148	4577	23399	12221	0	9810	8157	1294	148767	810	569	241	88139	64874	23265
May-2012	16	3464	0	183	225	2740	22482	8293	0	2869	9705	0	17504	586	422	164	4715	3118	1597
Jun-2012	19	3743	0	284	691	2740	19843	9741	0	3493	10797	0	14638	678	494	184	5236	3470	1766
<u>2012-13</u> <u>Jul-Apr</u>	28	409025		6891	59203	102173	3661489	728638	8533	132956	227969	30450	4029873	1108	752	356	12726	6630	6096
Jul-2012	26	9176	0	405	4373	2740	13534	12160	0	1696	11493	250	14827	897	646	251	7977	5147	2830
Aug-2012	28	4724	0	553	5173	2415	21109	13365	0	3005	10069	310	22942	911	654	257	8058	5170	2888
Sep-2012	20	3658	0	56	7248	3175	16703	5457	0	581	11376	3890	18220	577	430	147	5392	3219	2173
Oct-2012	36	6472	0	810	10123	3500	1198867	84744	0	16895	25680	280	639956	1421	914	507	15926	9023	6903
Nov-2012	36	257394	0	625	11434	2550	1033693	81345	8533	10362	29401	399	643883	1446	937	509	15664	8743	6921
Dec-2012	32	4496	0	741	6464	3449	891132	73533	0	6368	28660	380	809323	1137	753	384	12743	7580	5163
Jan-2013	29	15109	0	815	3777	6891	44025	73299	0	18619	29015	8013	127765	1315	878	437	15338	6634	8704
Feb-2013	29	9168	0	1002	3369	7407	46414	43375	0	20882	38932	7922	832259	1308	868	440	16253	6227	10026
Mar-2013	28	18079	0	983	3784	8132	29563	47663	0	23560	29765	439	76146	1319	882	437	19275	6719	12556
Apr-2013	18	80749	0	901	3458	61914	366449	293697	0	30988	13578	8567	844552	745	553	192	10637	7840	2797

# PRODUCTION AND EMPLOYMENT IN SUGAR INDUSTRY IN KHYBER PAKHTUNKHWA

Annexure-XV

Year/Month	No. of Reporting Unit	Production in	Value (Rs. in 000)	Employment			Salaries/Wages Paid (Rs. in 000)		
				Total	Production	Non-Production	Total	Production	Non-Production
2000-01	4	53072	276000	1495	724	771	3186	2281	905
2001-02	3	129357	12870	1653	917	736	2738	1988	750
2002-03	4	110764	557310	1945	941	1004	3267	2503	764
2003-04	4	199034	1191019	1849	988	861	4885	3839	1046
2004-05	2	104834	856026	2013	947	1066	4870	2778	2092
2005-06	3	94545	250058	1271	801	470	2993	1988	1005
2006-07	3	87243	1100069	1383	720	663	4447	2784	1663
2007-08	4	66772	312176	1242	786	456	7050	5485	1565
2008-09	3	32937	525374	1170	679	491	7172	4867	2305
2009-10	4	9140	362177	561	313	248	3897	2465	1432
2010-11	6	180943	983216	911	614	297	3983	2811	1172
2011-12	6	203410	391623	2370	1551	819	9070	6320	2750
<u>Jul-Apr</u>	3.2	198872	391623	2355	1572	783	8188	5669	2519
Jul-2011	2	0	0	565	376	189	7527	7174	353
Aug-2011	2	0	0	572	382	190	1563	1192	371
Sep-2011	2	0	0	577	386	191	1563	1192	371
Oct-2011	2	0	0	1816	1301	515	1426	970	456
Nov-2011	5	950	0	2478	1743	735	4656	2640	2016
Dec-2011	6	60929	107898	4038	2781	1257	11027	6937	4090
Jan-2012	6	67962	107898	4034	2782	1252	12336	8222	4114
Feb-2012	6	60428	149272	3997	2764	1233	12115	8016	4099
Mar-2012	5	8599	26555	3251	1872	1379	18675	12994	5681
Apr-2012	5	4	0	2226	1334	892	10994	7357	3637
May-2012	4	2145	0	2624	1479	1145	13177	9149	4028
Jun-2012	5	2393	0	2268	1414	854	13775	9994	3781
<u>2012-13 Jul-Apr</u>	3	62091	501984	1218	837	381	15877	11075	4802
Jul-2012	4	0	0	1313	841	472	11418	7625	3793
Aug-2012	4	0	0	1218	756	462	10013	6341	3672
Sep-2012	4	0	0	1370	748	622	13400	7666	5734
Oct-2012	3	0	0	815	544	271	11026	7842	3184
Nov-2012	3	6872	0	995	700	295	13576	9555	4021
Dec-2012	3	16470	125496	1203	913	290	17717	14689	3028
Jan-2013	3	10645	125496	1197	912	285	19702	14840	4862
Feb-2013	3	12069	125496	1189	904	285	18500	13385	5115
Mar-2013	3	16035	125496	1189	903	286	18490	13060	5430
Apr-2013	1	0	0	473	308	165	9049	4668	4381

**PRODUCTION AND EMPLOYMENT IN WOOLEN INDUSTRY IN KHYBER PAKHTUNKHWA**

**Annexure-XVII**

Year/Month	No. of Reporting Unit	Production		Value of Production		Employment			Salaries/Wages Paid (Rs.)		
		Blanket	Fibre	Blanket	Fibre	Total	Production	Non-Production	Total	Production	Non-Production
2000-01	2	51732	1485	18716	123098	5997	4591	1406	5442	4391	1051
2001-02	2	66995	1497	23986	131848	4866	3828	1038	5847	4586	1261
2002-03	2	63991	1331	23012	114070	5604	4268	1336	5538	3967	1571
2003-04	1	70864	1306	26101	114698	512	426	86	0	0	0
2004-05	2	98361	1253	33583	147697	850	634	216	2453	1538	915
2005-06	2	102284	1198	31525	151130	928	678	250	4615	3735	880
2006-07	2	64872	1317	20125	178683	1322	1056	266	5375	4277	1098
2007-08	2	89147	1605	21496	223850	537	432	105	2777	2413	364
2008-09	2	65599	1435	33871	212688	812	639	173	4751	3623	1128
2009-10	3	80365	131680	25116	306695	848	690	158	3838	3326	512
2010-11	2	55575	1638	17024	290951	462	395	67	3671	3339	332
2011-12	2	85567	1455	47694	383449	459	388	71	4803	3917	886
<u>Jul-Apr</u>	1	64094	1166	34537	296514	459	388	71	4804	3917	887
Jul-2011	1	4708	87	2368	20227	459	388	71	4857	3931	926
Aug-2011	1	6534	89	3286	20729	459	388	71	4811	3921	890
Sep-2011	1	4059	99	2041	22959	459	388	71	4811	3921	890
Oct-2011	1	6437	144	3237	33404	459	388	71	4800	3920	880
Nov-2011	1	4446	125	2236	29061	459	388	71	4790	3910	880
Dec-2011	1	6183	119	3178	27640	459	388	71	4790	3910	880
Jan-2012	1	6974	135	3960	31393	459	388	71	4790	3910	880
Feb-2012	1	9549	108	5490	32673	459	388	71	4796	3916	880
Mar-2012	1	9251	133	5319	40031	459	388	71	4795	3915	880
Apr-2012	1	5953	127	3422	38397	459	388	71	4795	3915	880
May-2012	1	7466	122	4292	36786	459	388	71	4795	3915	880
Jun-2012	1	14007	167	8865	50149	459	388	71	4798	3918	880
<u>2012-13</u> <u>Jul-Apr</u>	1	58270	1304	31040	392325	469	394	75.2	4335	3448	887
Jul-2012	1	7684	111	1668	33318	459	388	71	4799	3919	880
Aug-2012	1	7202	94	4141	28200	459	388	71	4990	4109	881
Sep-2012	1	7023	147	4038	44295	459	388	71	4990	4110	880
Oct-2012	1	6608	129	4049	38739	459	388	71	4993	4112	881
Nov-2012	1	6658	127	3828	38216	459	388	71	5114	4222	892
Dec-2012	1	9214	184	5328	55281	459	388	71	5137	4244	893
Jan-2013	1	4025	125	2314	37518	459	388	71	3335	2443	892
Feb-2013	1	1810	107	1049	32337	459	388	71	3335	2444	891
Mar-2013	1	3676	150	2113	45137	459	388	71	3331	2441	890
Apr-2013	1	4370	130	2512	39284	561	448	113	3330	2440	890